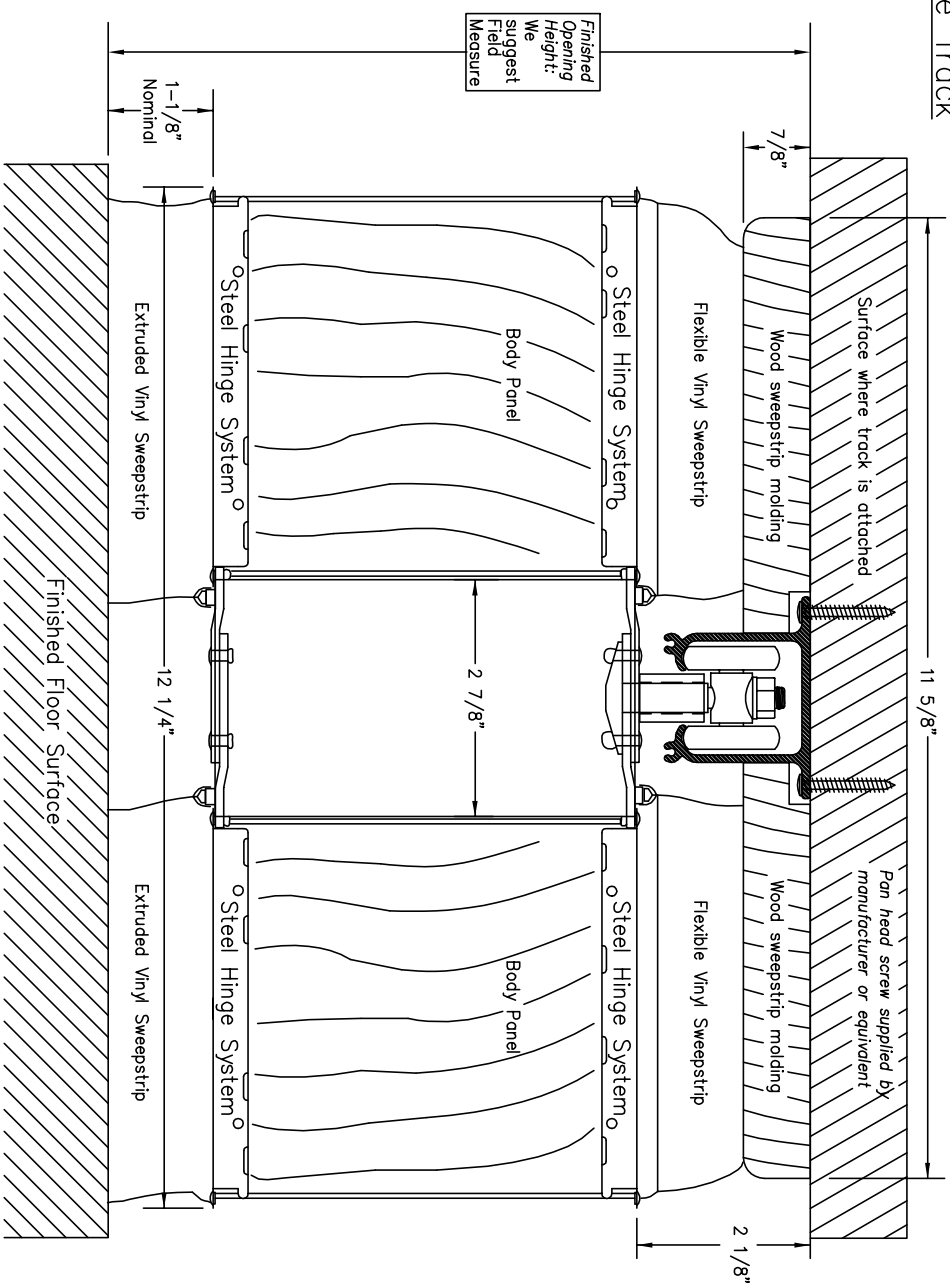
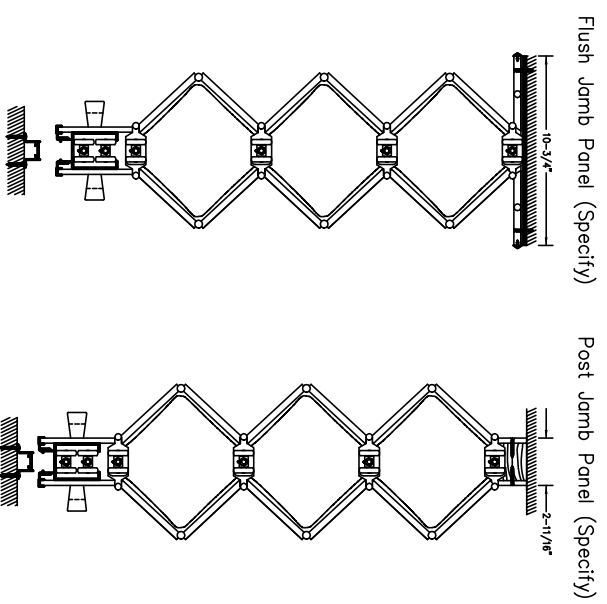


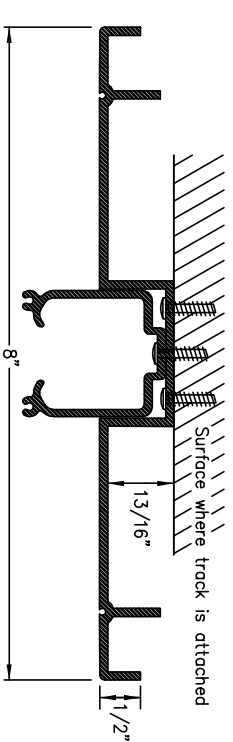
Surface Track



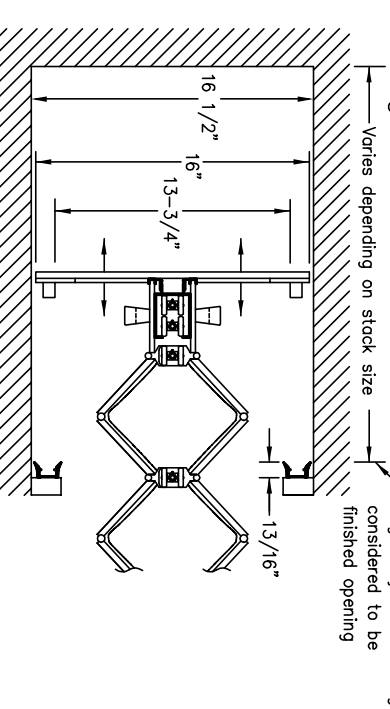
Mounting Panel Options



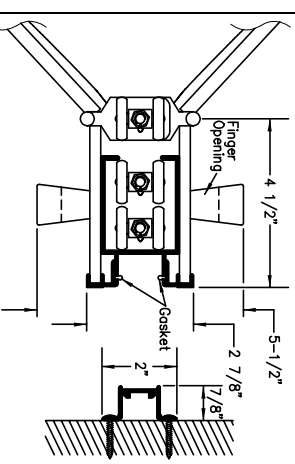
Optional Ceiling Guard Track



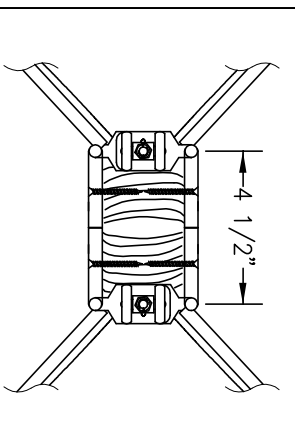
Sliding Jamb Panel



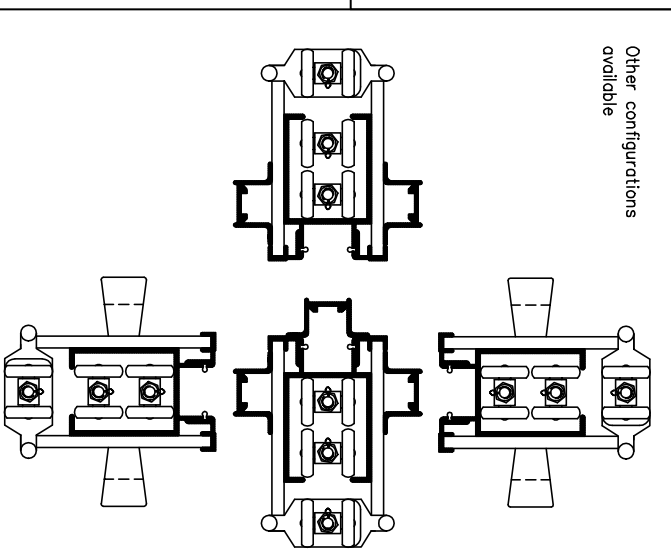
Lead Post, Jamb Moulding & Handle



Intermediate Rolling Post



Multiple Meeting Options



INFORMATION

**Width**  
Custom made to any width  
Maximum door section is 15' - 0"

**Height**  
Use intermediate posts for wider openings.  
Vinyl lam custom made to 12' - 1"  
Hardwood veneer custom made to 10' - 1"  
Natural hardwood or vinyl-lam on MDF core  
Extruded Vinyl: White, Brown or Sand  
Panel Connector  
Sweep Strip  
Hinge System  
Wheels  
1 1/8" Ball bearing nylon wheels on steel axes  
Track  
Aluminum (straight only): Clear  
Aluminum (straight only): Clear  
Lead and Jamb  
Aluminum: White, Brown or Sand  
Coordinated with panel connector  
Intermediate  
Faced to match body panel selection  
Latch  
Deadlatch with thumb turn two sides  
2" perlineal foot plus 4-1/2" for each lead  
Stack Dimension  
Construction Details by Others  
Header  
Door Weight

Height	Average Weight
8'-1"	28lbs. Per lineal foot
10'-1"	35lbs. Per lineal foot
12'-1"	42lbs. Per lineal foot

See Woodfold Accordion Door brochure for additional details

Catch/Lock Options

Magnet  
Privacy Latch  
Springlatch  
Keylock 1 Side  
Keylock 2 Side  
Single Cremone  
Double Cremone  
Footbolts  
Other Keyed Options

Magnet with strike plate  
Deadlatch with thumb turn one side  
Springlatch with thumb turn two sides  
Deadlatch with thumb turn one side, keylock one side  
Deadlatch with keylock two sides  
Single cremone bolt with keylock  
Double cremone bolt with keylock  
Locking or non locking  
Keyed alike, custom keyed, construction core  
Contact manufacture for more details

Architects Acceptance

Job Name: \_\_\_\_\_  
Job Location: \_\_\_\_\_  
Supplier: \_\_\_\_\_

Field Sound Transmission Class: The Accordion door (Series 3300) has a field sound transmission class (STC) of 33. Field tests were performed by TOWNE, RICHARDS and CHAUDIER INC., Seattle, Washington following the procedures specified in ASTM designation (Feb. 1994).

Qty.	Single/Pair	Single End/Double End	Left or Right Stack	Width X Height	Finish/Color	Comments

THESE SPECIFICATIONS ARE SUBJECT TO CHANGE WITHOUT NOTICE

THESE SPECIFICATIONS ARE SUBJECT TO CHANGE WITHOUT NOTICE

Woodfold-Marco Mfg. Inc.  
P.O. Box 346 Forest Grove, OR. 97116  
http://www.woodfold.com

Phone: 503-357-7181  
503-357-7185  
3300 SD 3/00