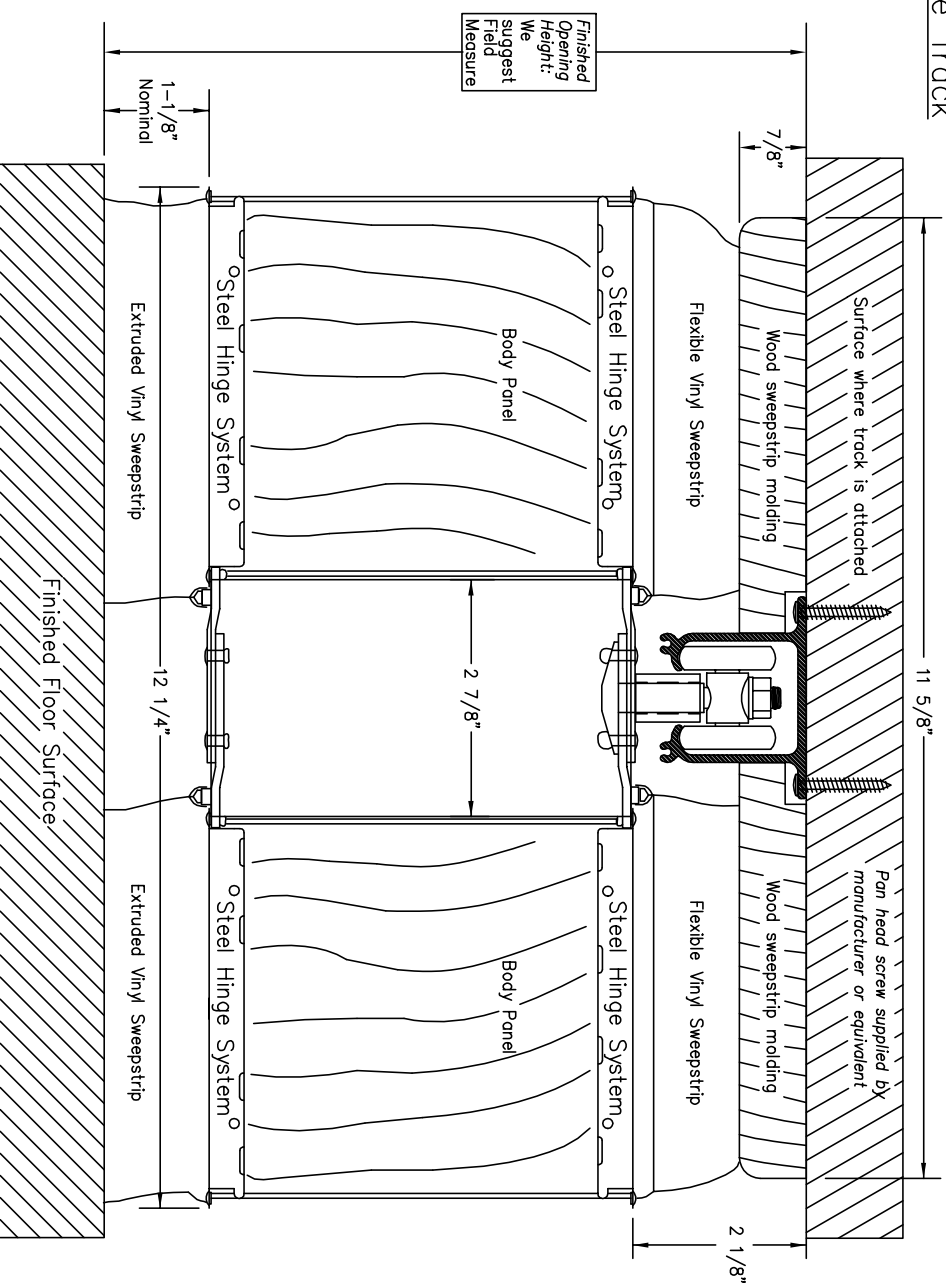
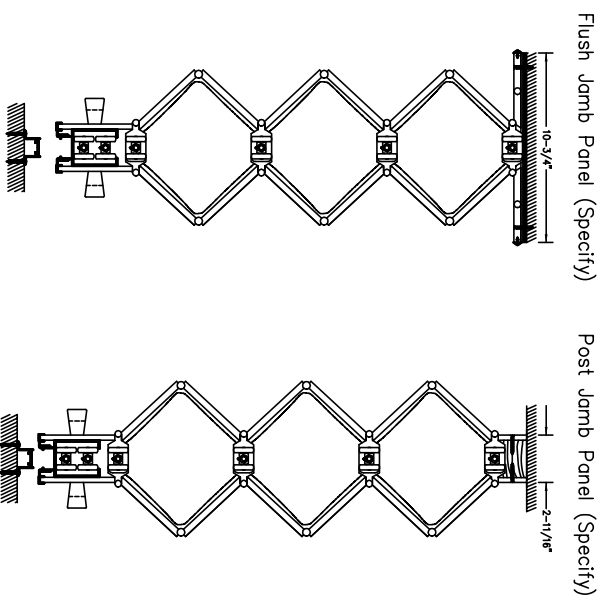


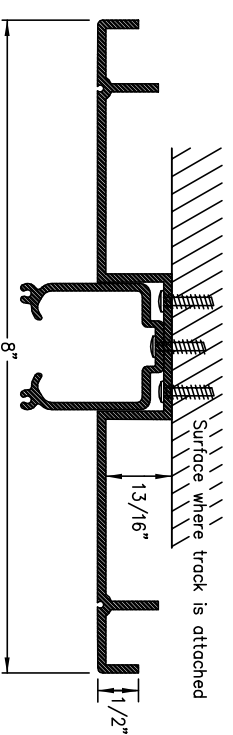
Surface Track



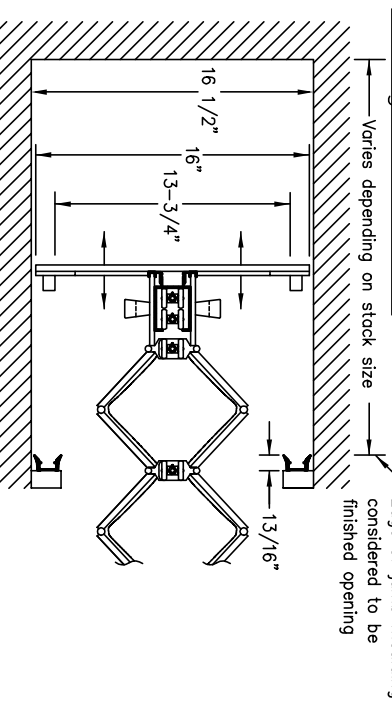
Mounting Panel Options



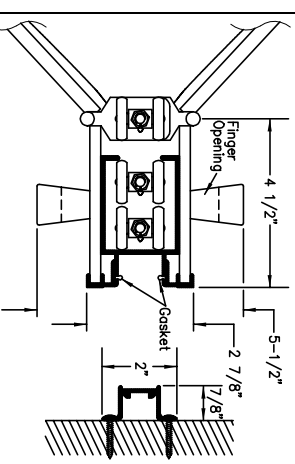
Optional Ceiling Guard Track



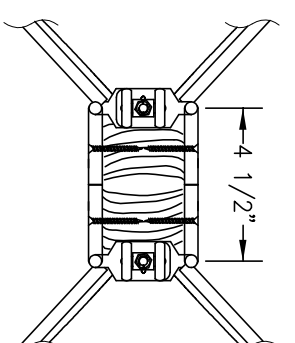
Sliding Jamb Panel



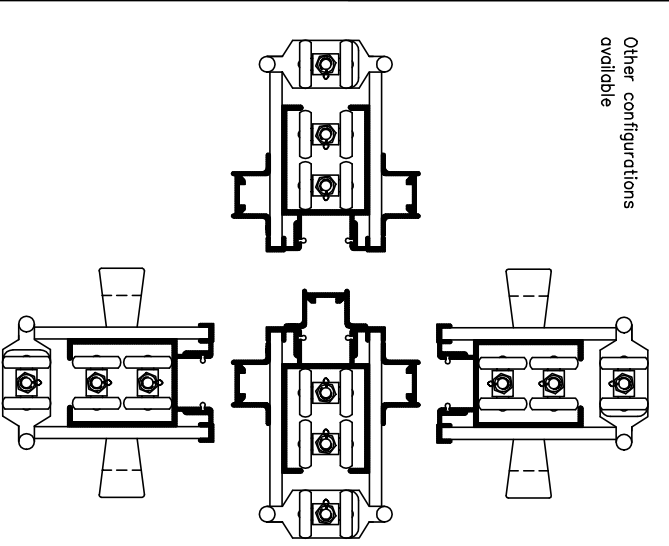
Lead Post, Jamb Moulding & Handle



Intermediate Rolling Post



Multiple Meeting Options



INFORMATION

Width
Custom made to any width
Maximum door section is 15' -0"

Height
Use intermediate posts for wider openings.
Vinyl lam custom made to 12' -1"
Hardwood veneer custom made to 10' -1"
Natural hardwood or vinyl-lam on MDF core
Extruded Vinyl: White, Brown or Sand
Panel Connector
Sweep Strip
Hinge System
Wheels
1 1/8" Ball bearing nylon wheels on steel axes
Track
Aluminum (straight only): Clear
Aluminum (straight only): Clear
Lead and Jamb
Aluminum: White, Brown or Sand
Coordinated with panel connector
Intermediate
Faced to match body panel selection
Latch
Deadlatch with thumb turn two sides
2" perlineal foot plus 4-1/2" for each lead
Header
Construction Details by Others
Door Weight
Average Weight
8-1" 28lbs. Per lineal foot
10'-1" 35lbs. Per lineal foot
12'-1" 42lbs. Per lineal foot

Catch/Lock Options

Magnet
Privacy Latch
Springlatch
Keylock 1 Side
Keylock 2 Side
Single Cremone
Double Cremone
Footbolts
Other Keyed Options
Magnet with strike plate
Deadlatch with thumb turn one side
Springlatch with thumb turn two sides
Deadlatch with thumb turn one side, keylock one side
Keylock 2 Side
Single cremone bolt with keylock
Double cremone bolt with keylock
Locking or non locking
Keyed alike, custom keyed, construction core
Contact manufacture for more details

See Woodfold Accordion Door brochure for additional details

Architects Acceptance

Job Name: _____
Job Location: _____
Supplier: _____

Field Sound Transmission Class: The Accordion door (Series 3300) has a field sound transmission class (STC) of 33. Field tests were performed by TOWNE, RICHARDS and CHAUDIER INC., Seattle, Washington following the procedures specified in ASTM designation (Feb. 1994).

Qty.	Single/Pair	Single End/Double End	Left or Right Stack	Width X Height	Finish/Color	Comments

THESE SPECIFICATIONS ARE SUBJECT TO CHANGE WITHOUT NOTICE

THESE SPECIFICATIONS ARE SUBJECT TO CHANGE WITHOUT NOTICE

Woodfold-Marco Mfg. Inc.
P.O. Box 346 Forest Grove, OR. 97116
http://www.woodfold.com

Phone: 503-357-7181
503-357-7185
3300 SD 3/00